

## Battle of Wilson's Creek, 10 August 1861



### Battle of Wilson's Creek (Oak Hills)

#### Belligerents



United States (Union)



Confederate States (Confederacy)  
Missouri State Guard

#### Commanders and leaders

- BG Nathaniel Lyon†, USMA 1841
- COL Franz Sigel, 3rd Missouri Infantry
- MAJ Samuel Sturgis, USMA 1846

- MG Sterling Price, Missouri State Guard
- BG Ben McCulloch, Army of the West
- BG, Nicholas Pearce, USMA 1850

#### Units involved

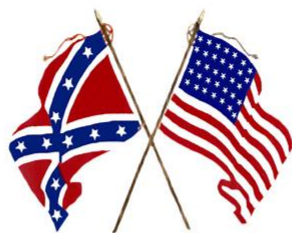
- Army of the West

- Missouri State Guard
- Army of the West
- Army of Arkansas, 1<sup>st</sup> (Western) Division

#### Strength

~ 5,430

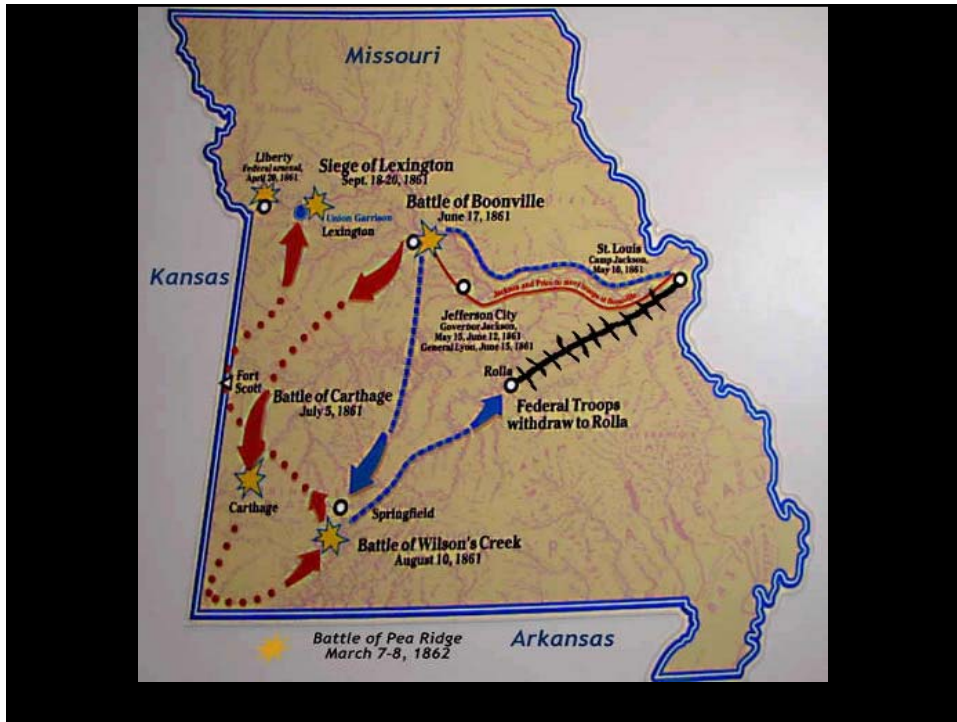
~ 12,120



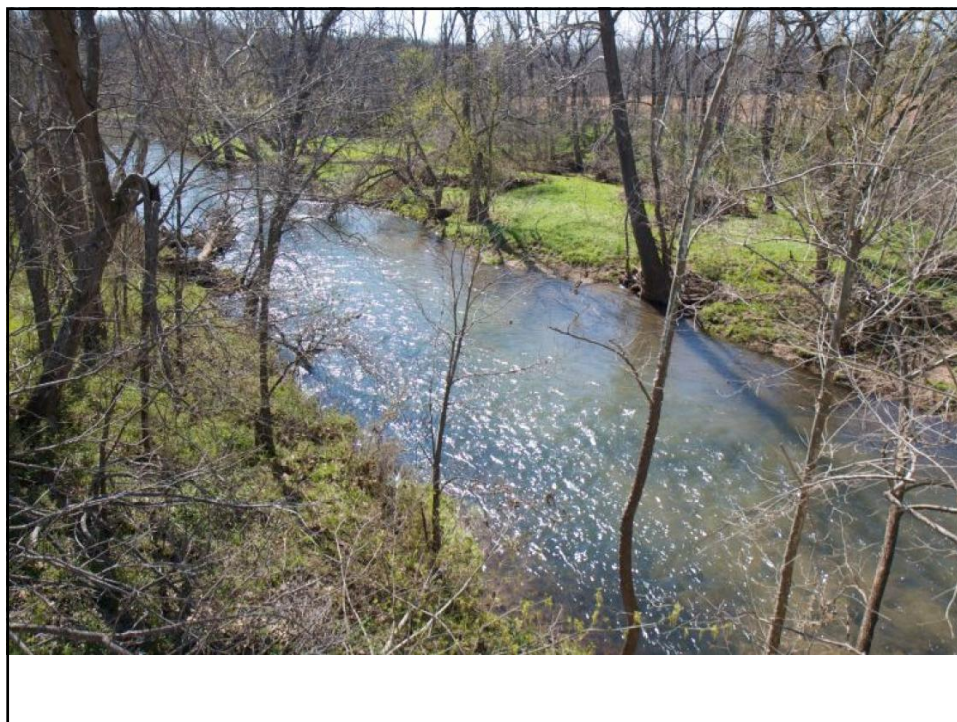
# BEFORE THE BATTLE



Bushwhacker Attack on Lawrence, Kansas. The culmination of violence begetting more violence  
Harper's Weekly, September 5, 1863, Library of Congress



Soldier's Drawing of the Battle of Wilson's Creek. Pvt. Andrew Tinkham of the First Kansas Infantry wrote to his brother, "I send you a picture of the battle of Wilsons C just at the time I was shot when our battery had a masking fire on the rebels the cannon on the left is Tottens battery the first reg is the 1st Kansas next is the Missouri boys."



Two guns of Captain James Totten's battery under Lieutenant George Sokalski fired the opening shots of the battle of Wilson's Creek.



In the opening phases of the battle, Gen. Lyon dispatched Capt. Joseph Plummer and a battalion of Regulars to cross Wilson's Creek. They advanced through Gibson's oatfield only to be driven back by Confederate artillery.



Confederate general Sterling Price made his headquarters in Edward's Cabin near Wilson's Creek



Once the Union attack began, General Franz Sigel ordered Franz Backoff's Missouri Light Artillery to begin shelling the Confederate position from the rear. The confused Southerners, however, soon regrouped and drove Sigel's men back across Wilson's Creek.

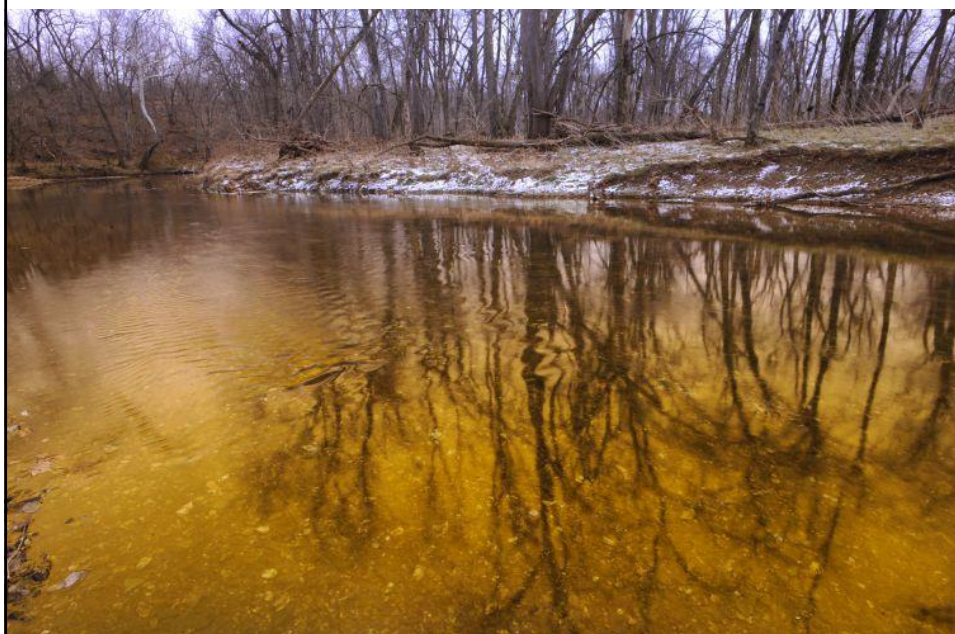




Lyon's Federals quickly went on the defensive in the face of the Confederate counterattack, making their stand on what is now known as Bloody Hill. When the smoke cleared, more than 1,700 Union and Confederate troops had become casualties on this part of the field.



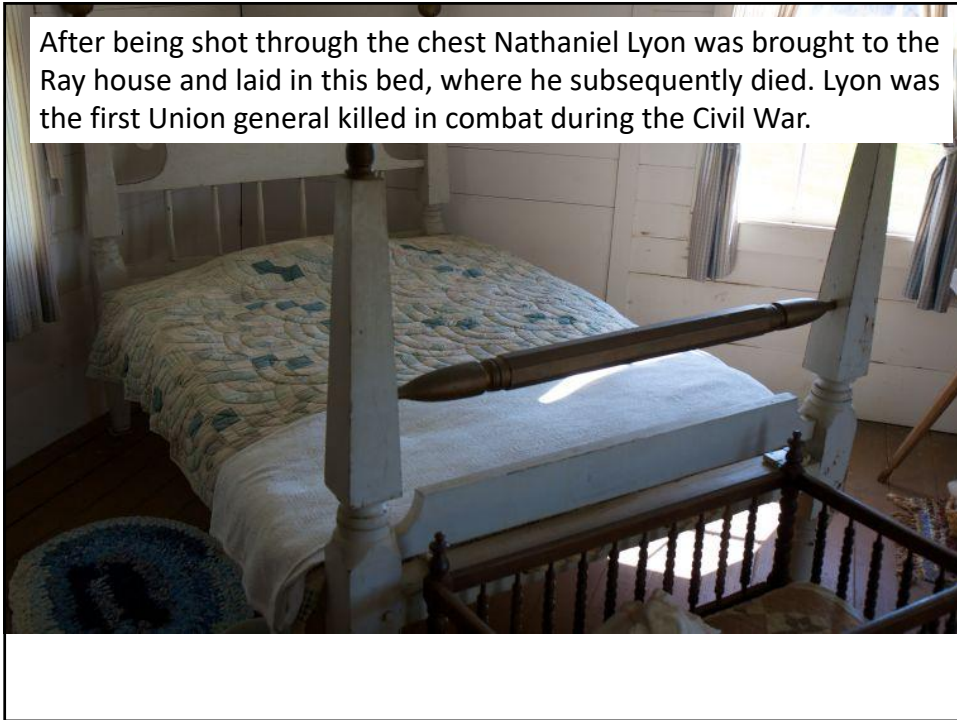
Confederates of Benjamin McCullough's Western Army crossed Wilson's Creek at this point on their way to Bloody Hill



Located on the eastern bank of Wilson's Creek, the John Ray house was used as a Confederate field hospital during the battle. Union general Nathaniel Lyon was also brought here at the end of the fighting.



After being shot through the chest Nathaniel Lyon was brought to the Ray house and laid in this bed, where he subsequently died. Lyon was the first Union general killed in combat during the Civil War.



**Entrance to the Ray House cellar where the Roxanna, Aunt Rhoda and the kids took refuge from the battle**



© Midwest Wanderer

This outbuilding on the Ray farm, which was the family's only source of water, is one of only two surviving wartime structures on the Wilson's Creek battlefield.



### Ray Cornfield

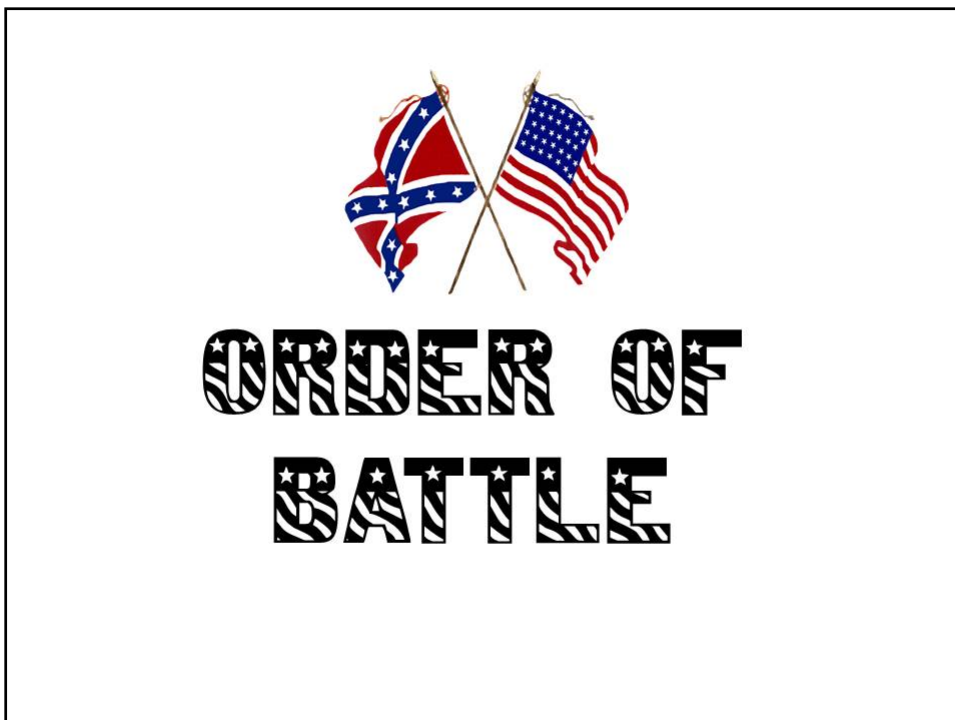
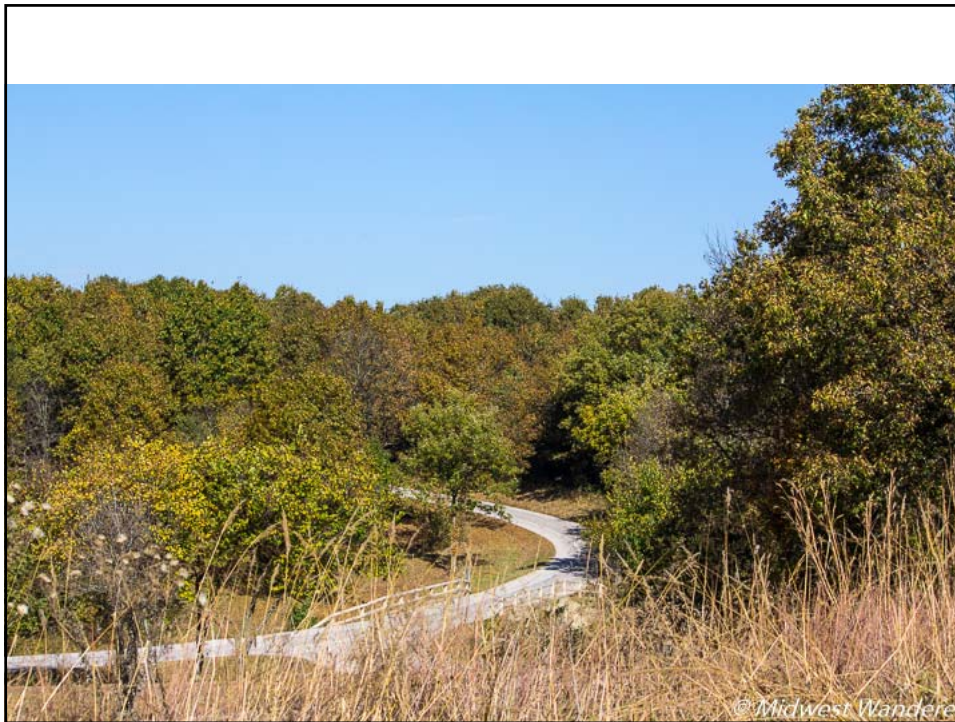


**Price's HQ from Bloody Hill**

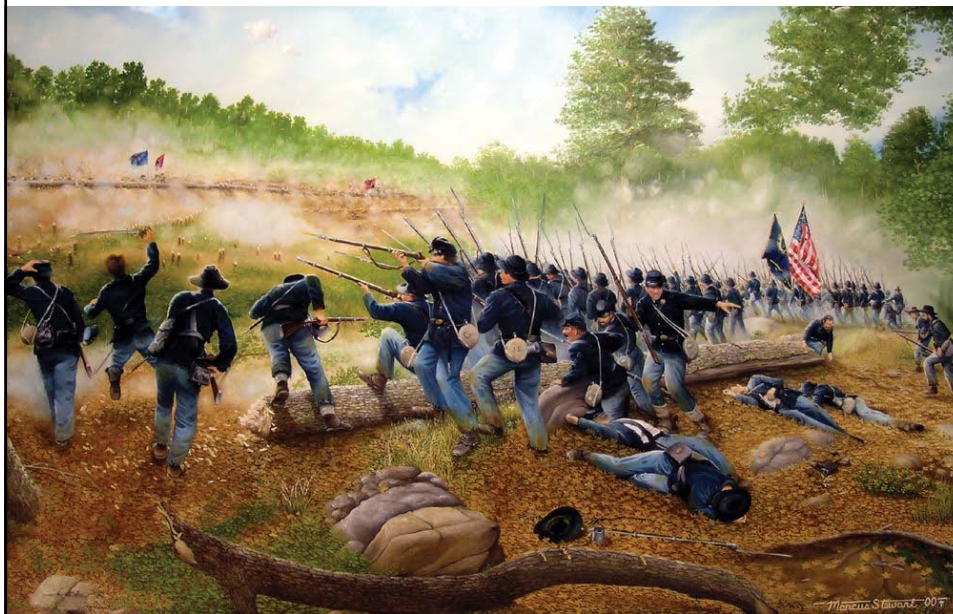


**Edward's Cabin**





## Union Order of Battle



## Union Order of Battle



**4,300 men;  
10 guns**

### Army of the West

BG Nathaniel Lyon (k)  
MAJ Samuel D. Sturgis

#### Staff:

- **Asst. Inspector General:**  
BG Thomas W. Sweeny
- **Chief of Staff:**  
Maj. John M. Schofield

### First Brigade

MAJ Samuel D. Sturgis

**2nd Missouri Infantry** (2 coys)  
MAJ Peter J. Osterhaus  
**1st U.S. Infantry** (4 coys):  
CPT Joseph B. Plummer (w)  
CPT Arch Houston  
**Company I, 2nd Kansas  
Infantry (mounted):**  
CPT Samuel N. Wood  
**Company D, 1st U.S. Cavalry:**  
LT Charles W. Canfield  
**Company F, 2nd U.S. Artillery:**  
CPT James Totten

### Second Brigade

COL Franz Sigel

**3rd Missouri Infantry:**  
LTC Anselm Albert  
**5th Missouri Infantry:**  
COL Charles E. Salomon  
**Company I, 1st U.S. Cavalry:**  
CPT Eugene A. Carr  
**Coy C, 2nd U.S. Dragoons:**  
LT Charles E. Farrand  
**Backof's Battery, Missouri  
Light Artillery:**  
LT Edward Schuetzenbach,  
LT Frederick Schaefer

**1,100 men; 6 guns**

### Third Brigade

LTC George L. Andrews

**1st Missouri Infantry:**  
LTC George L. Andrews  
(w)  
CPT Theodore Yates  
**2nd U.S. Infantry** (4 coys):  
MAJ Frederick Steele  
**Du Bois' Battery:**  
LT John V. Du Bois

### Fourth Brigade

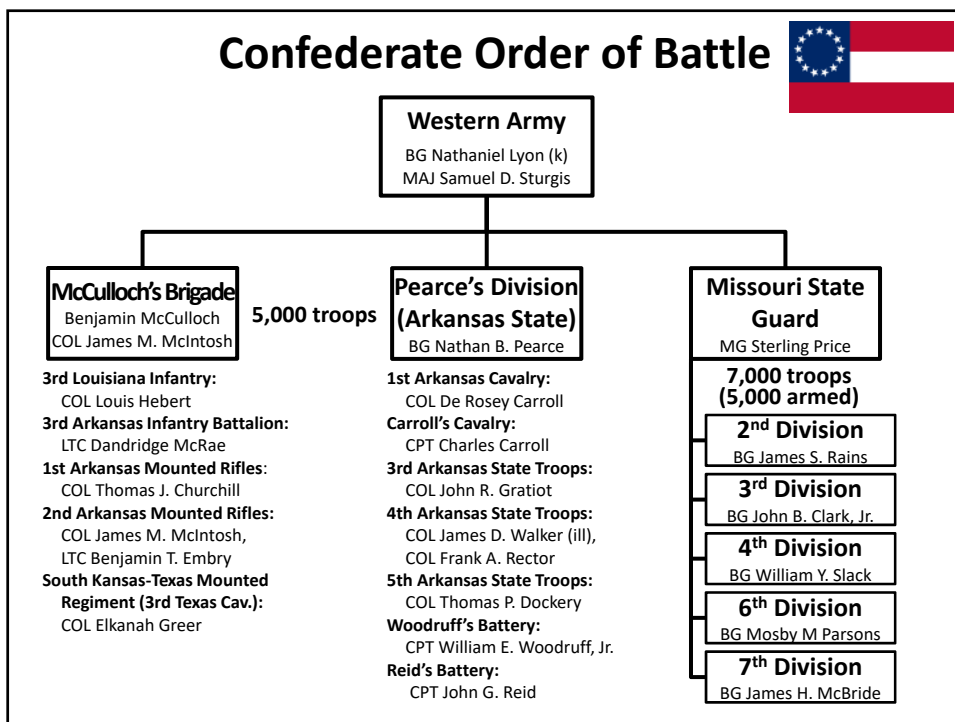
COL George Deitzler (w)

**1st Iowa Infantry:**  
COL John F. Bates  
**1st Kansas Infantry:**  
COL George Deitzler  
**2nd Kansas Infantry:**  
COL Robert B. Mitchell (w)  
LTC Charles W. Blair  
**13th Illinois Infantry** (21  
men):  
LT James Beardsley  
**Home Guards:**  
CPT Clark Wright

## Confederate Order of Battle

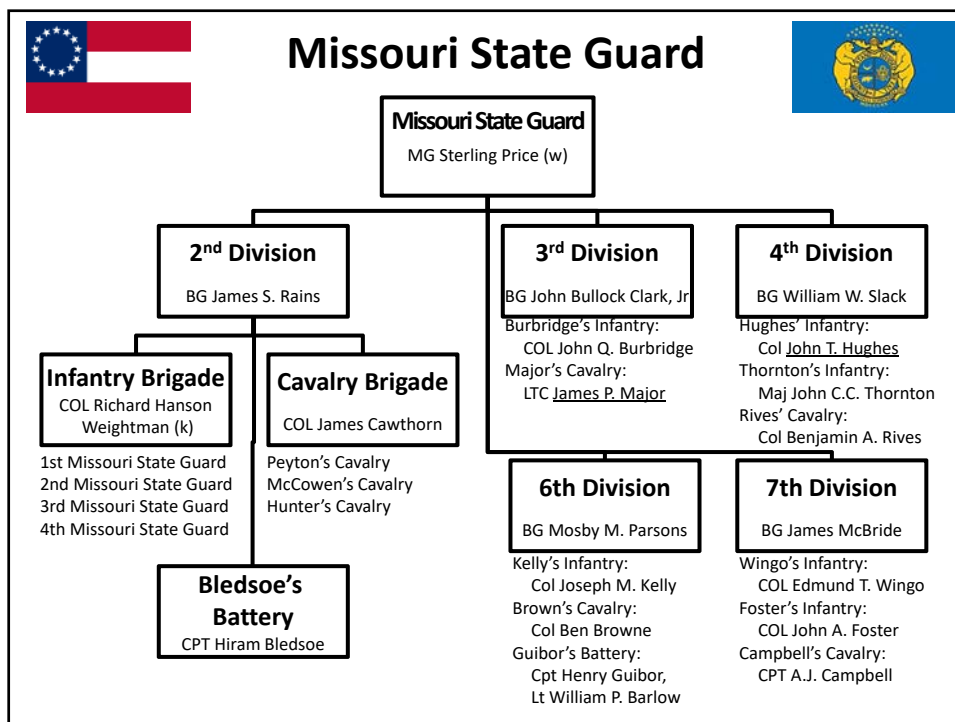


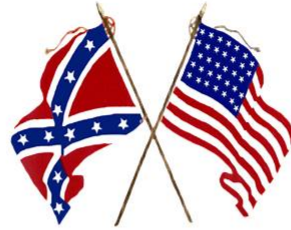
## Confederate Order of Battle





Company H, 3rd Arkansas State Troops, who fought on Bloody Hill





**THE BATTLE OF  
WILSON'S CREEK-  
BATTLE OF OAK  
HILLS**

**Battle of Wilson's Creek, 10 August 1861**



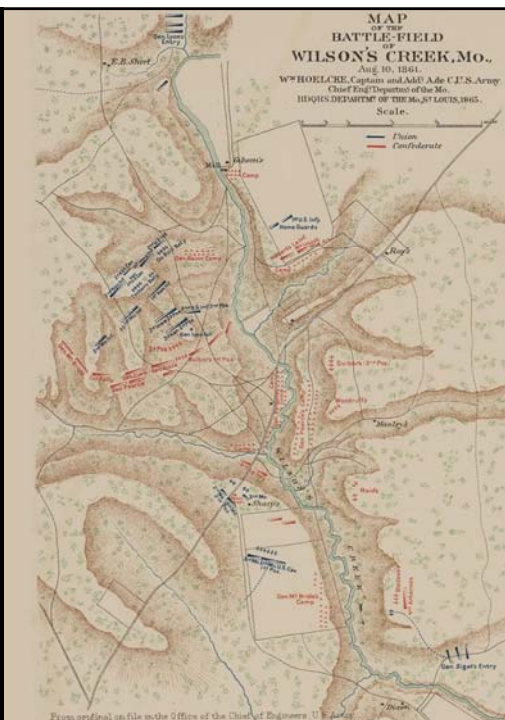
### Mural in the Missouri State Capitol



### Battle of Wilson's Creek--Aug. 10, 1861

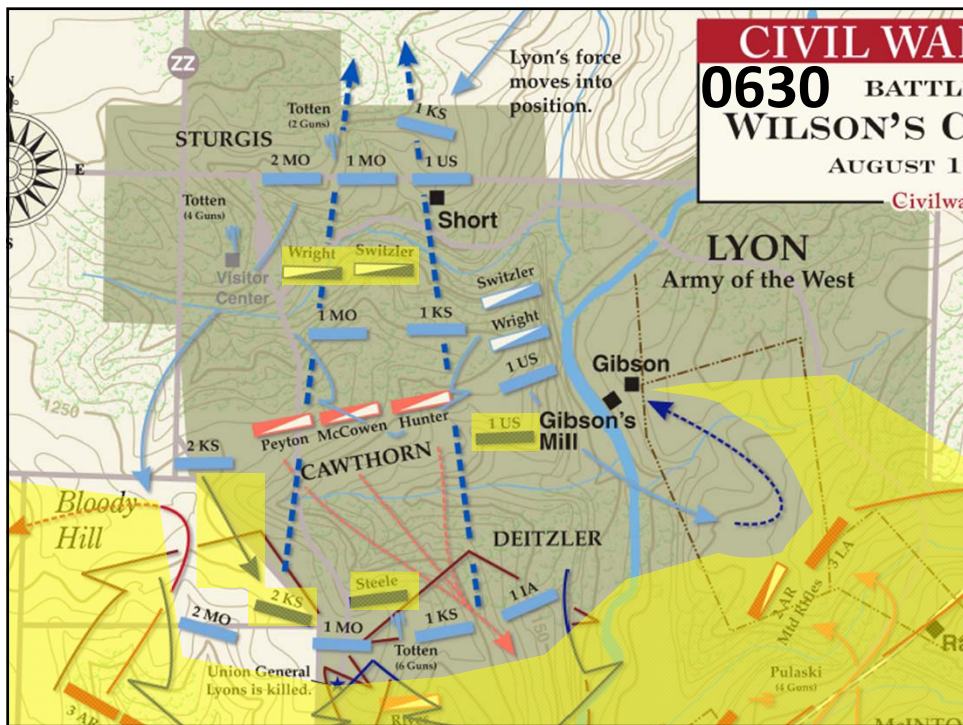
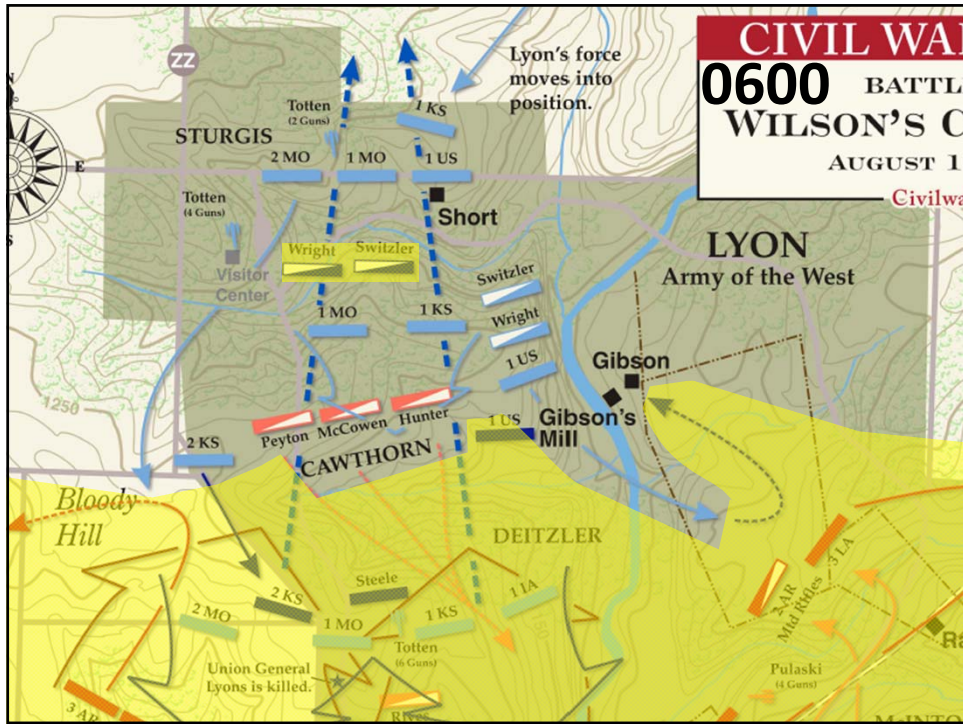


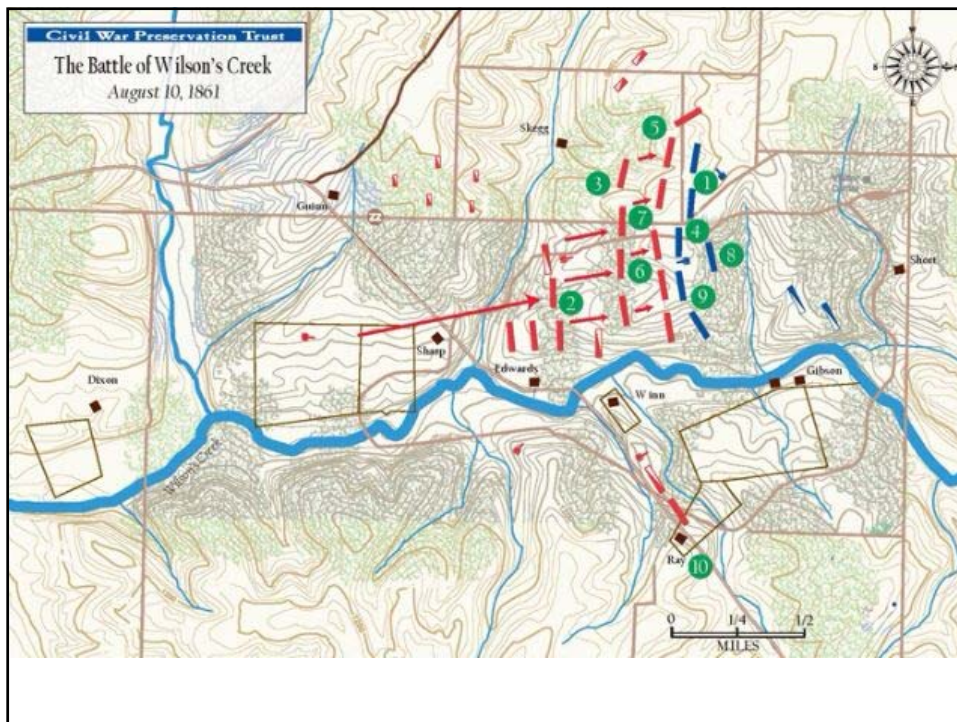
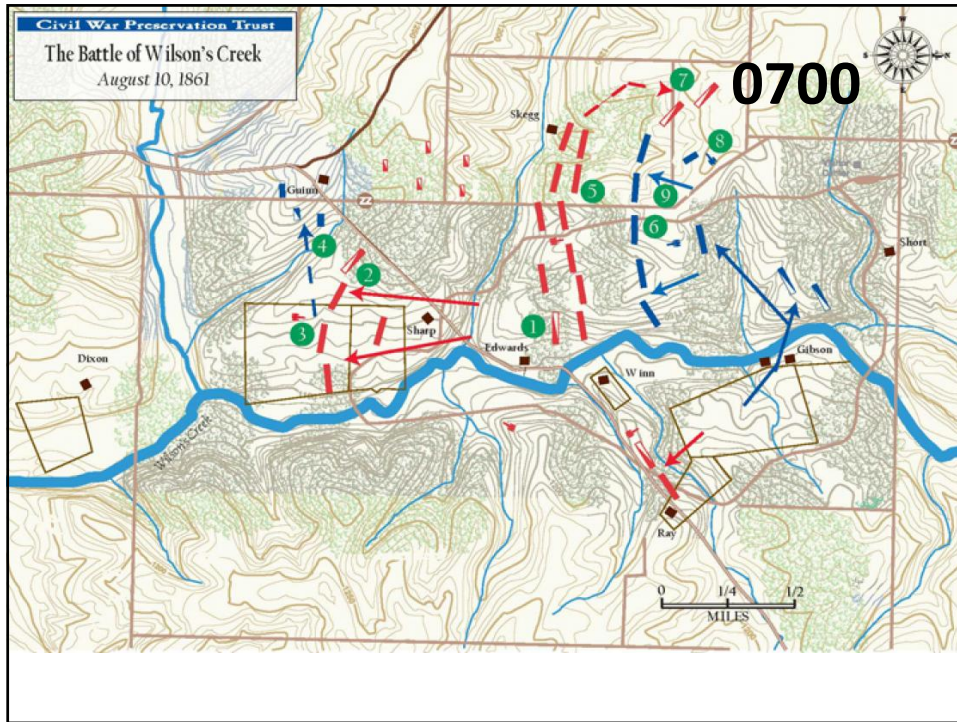
Lyons' 4,300 men attack from the north.

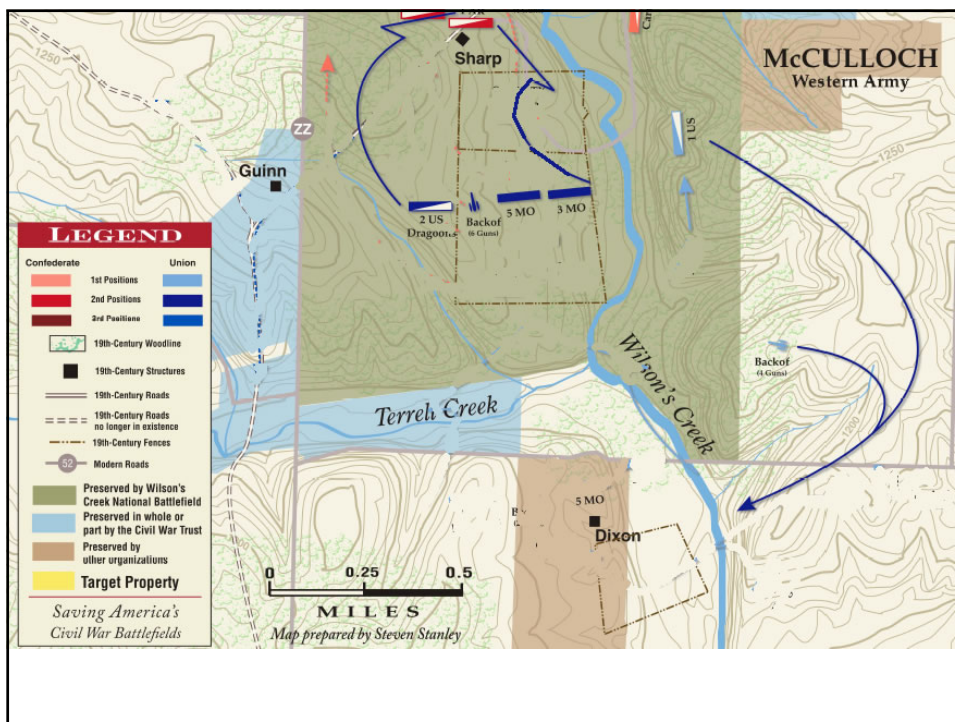
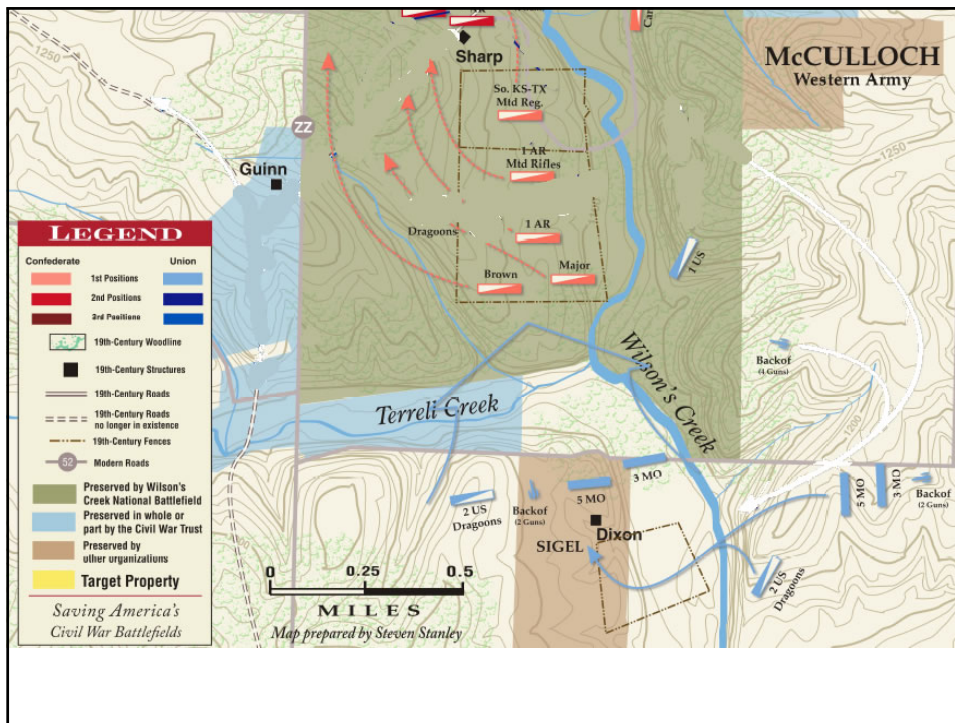


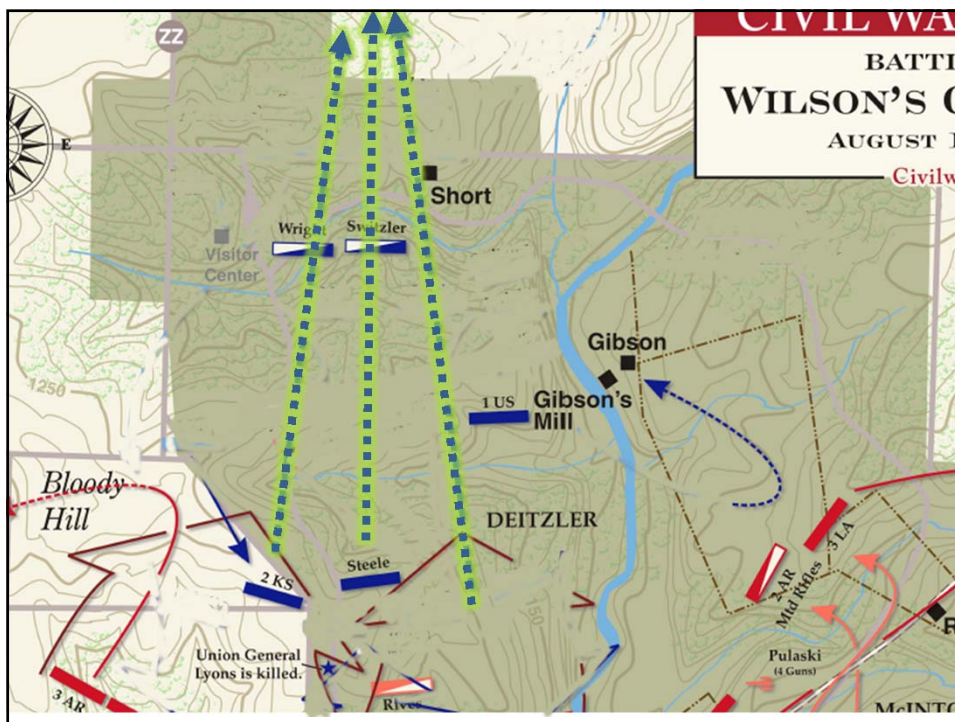
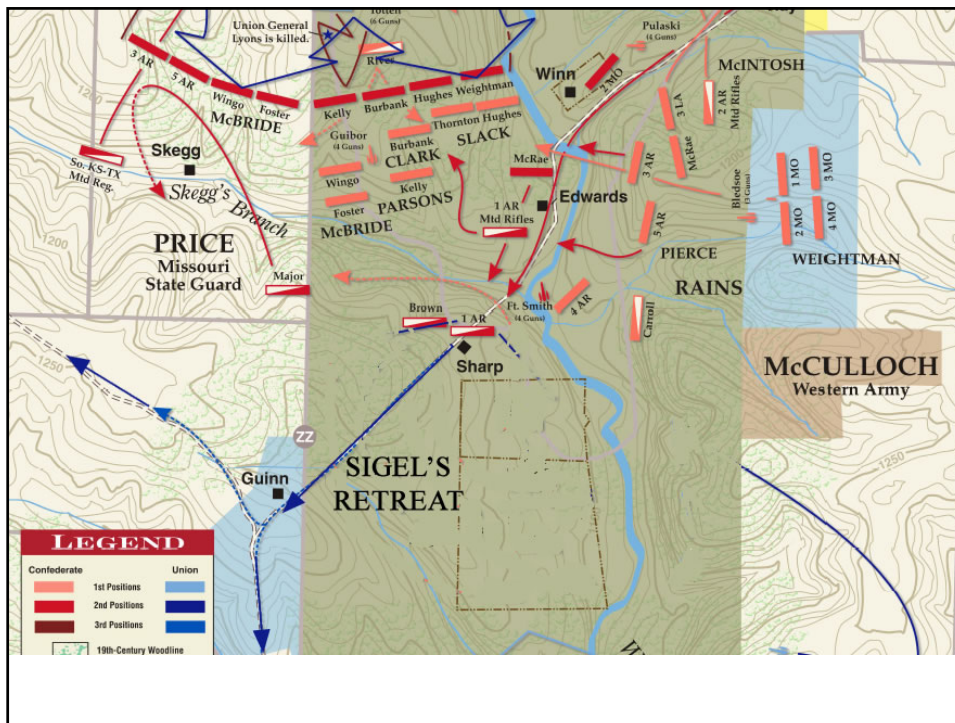
12,000+ Confederates are camped in the centre

Sigel's 1,100 men attack from the south











Period sketch depicting the death of General Lyon



Commander of the Union Army of the West, Brig. Gen. Nathaniel Lyon was killed while rallying his troops. In the years following the battle, veterans stacked rocks on the spot where their leader fell.



This modest tablet marking the spot of Nathaniel Lyon's death, is the only monument on the Wilson's Creek battlefield.



### Battle of Wilson's Creek (Oak Hills)

#### Belligerents

 United States (Union)	 Confederate States (Confederacy)
	 Missouri State Guard

#### Commanders and leaders

- |  |   |
|--|---|
| <ul style="list-style-type: none"> <li>• BG Nathaniel Lyon†, USMA 1841</li> <li>• COL Franz Sigel, 3rd Missouri Infantry</li> <li>• MAJ Samuel Sturgis, USMA 1846</li> </ul> | <ul style="list-style-type: none"> <li>• MG Sterling Price, Missouri State Guard</li> <li>• BG Ben McCulloch, Army of the West</li> <li>• BG, Nicholas Pearce, USMA 1850</li> </ul> |
|--|---|

#### Units involved

- |  |   |
|--|---|
| <ul style="list-style-type: none"> <li>• Army of the West</li> </ul> | <ul style="list-style-type: none"> <li>• Missouri State Guard</li> <li>• Army of the West</li> <li>• Army of Arkansas, 1<sup>st</sup> (Western) Division</li> </ul> |
|--|---|

#### Strength

~ 5,430

~ 12,120

#### Casualties

258 KIA	<b>1,317</b> (24.3%)	277 KIA	<b>1,232</b> (10.2%)
873 WIA		945 WIA	
186 MIA		10+ MIA	



## Union Casualties - Battle of Wilson's Creek

NOTE: Using known names only (83% of total casualties)

Unit	KIA	WIA	DOW	MIA	Total
1 <sup>st</sup> Missouri	23	195	10	5	233
2 <sup>nd</sup> Missouri	2	24	0	0	26
1 <sup>st</sup> Iowa	10	152	7	3	172
1 <sup>st</sup> Kansas	75	229	25	3	332
2 <sup>nd</sup> Kansas	5	62	7	1	75
Dade Home Guards	0	3	0	0	3
U.S. Regulars	30	92	10	5	137
Unknown	0	2	0	0	2
<b>28.6%</b> Subtotal Lyons/Sturgis	<b>145</b>	<b>759</b>	<b>59</b>	<b>17</b>	<b>980</b>
3 <sup>rd</sup> Missouri	6	46	2	4	58
5 <sup>th</sup> Missouri	9	22	1	7	39
Backof's	5	7	0	6	18
1 <sup>st</sup> U.S. Reserve	0	1	0	1	2
<b>10.6%</b> Subtotal 2nd Brigade	<b>20</b>	<b>76</b>	<b>3</b>	<b>18</b>	<b>117</b>
<b>Totals (24.2% of 4,530)</b>	<b>165</b>	<b>835</b>	<b>62</b>	<b>35</b>	<b>1097</b>

Source: <http://www.chrisanddavid.com/wilsonscreek/roles/CASUALTIUNI.html>